

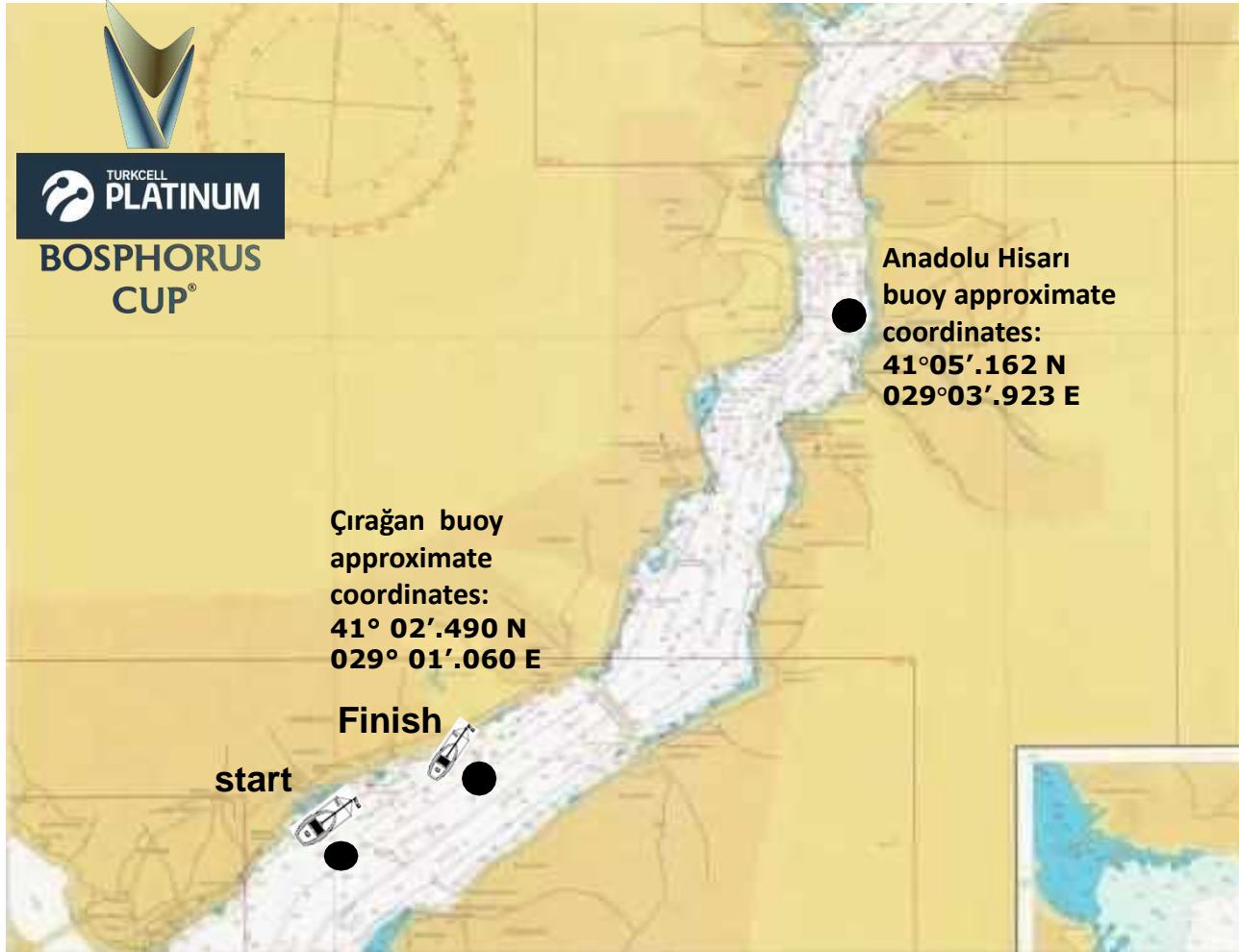


IRC 0-IRC 1-IRC 2-IRC 3-IRC 4  
-CRUISER  
DIVISIONS



# TURKCELL PLATINUM BOSPHORUS CUP

26.09.2020 SATURDAY



**START LINE:** Line between the orange flag displayed on Race Committee boat located close to the Besiktas Bahcesehir University on the port and a mark at the starboard.

**FINISH LINE:** Line between the orange flag displayed on the Race Committee boat located close to the Ciragan Palace at the starboard and a mark on the port.

**Start:** Start will be given towards North.

**Finish:** Finishes will be toward South.

## IRC 0-1-2-3-4- Cruiser Divisions

**COURSE 1 :** Beşiktaş Bahçeşehir University(Start) - Anatolian Fortress Buoy to the port – Çırağan Buoy at the starboard – Anatolian Fortress Buoy to the port - Çırağan Buoy at the starboard - Anatolian Fortress Buoy to the port - Ciragan Palace Finish(Approximately 21 miles).

**COURSE 2 :** Beşiktaş Bahçeşehir University(Start) - Anatolian Fortress Buoy to the port – Çırağan Buoy at the starboard – Anatolian Fortress Buoy to the port - Ciragan Palace Finish(Approximately 14 miles).

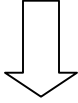
**COURSE 3 :** Beşiktaş Bahçeşehir University(Start) - Anatolian Fortress Buoy to the port - Ciragan Palace Finish(Approximately 8 miles).

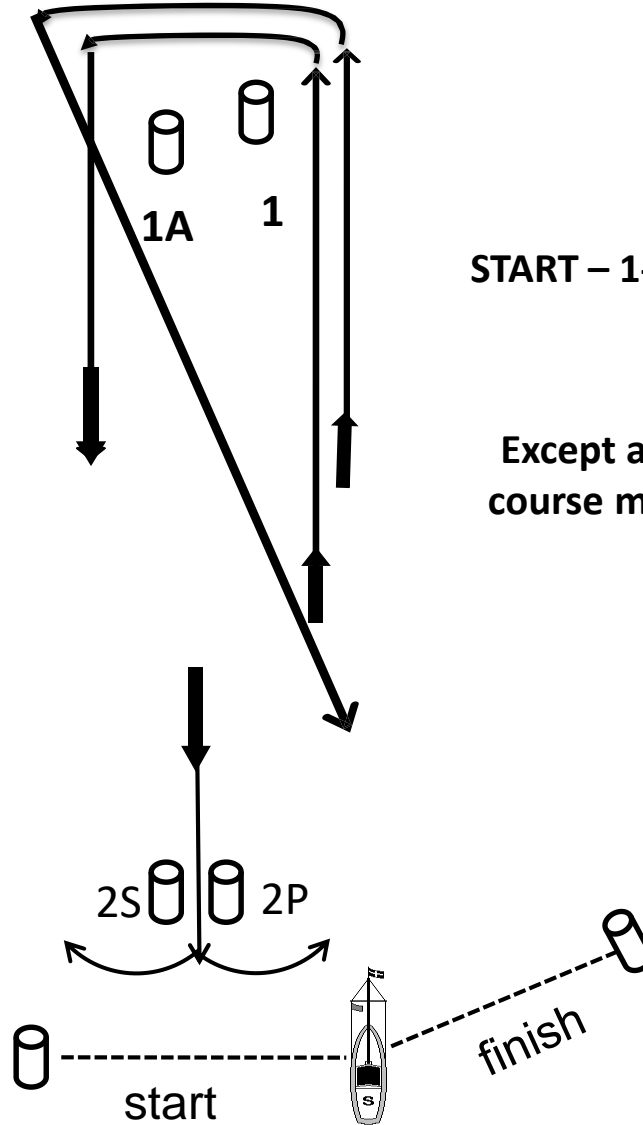
\*\* The routes to be applied will be shown before the warning sign with a white flag with a black number on it.



**TURKCELL PLATINUM  
BOSPHORUS CUP  
COURSE 1**

**27 SEPTEMBER 2020  
Windward-Leeward Course**

WIND  RÜZGAR

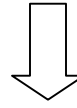


**START – 1-1A-2S/2P-1-1A-FINISH**

**Except at a gate(2S/2P), all  
course marks shall be left to  
port.**



WIND



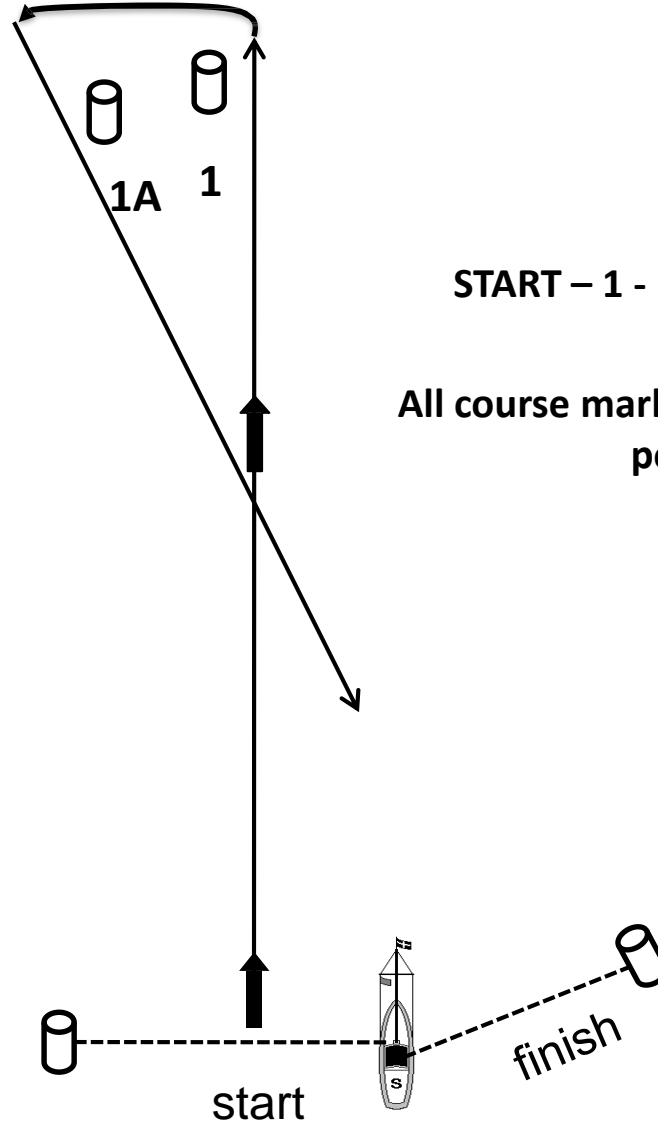
RÜZGAR

**TURKCELL PLATINUM  
BOSPHORUS CUP**

**COURSE 2**

**27 SEPTEMBER 2020**

**Windward-Leeward Course**

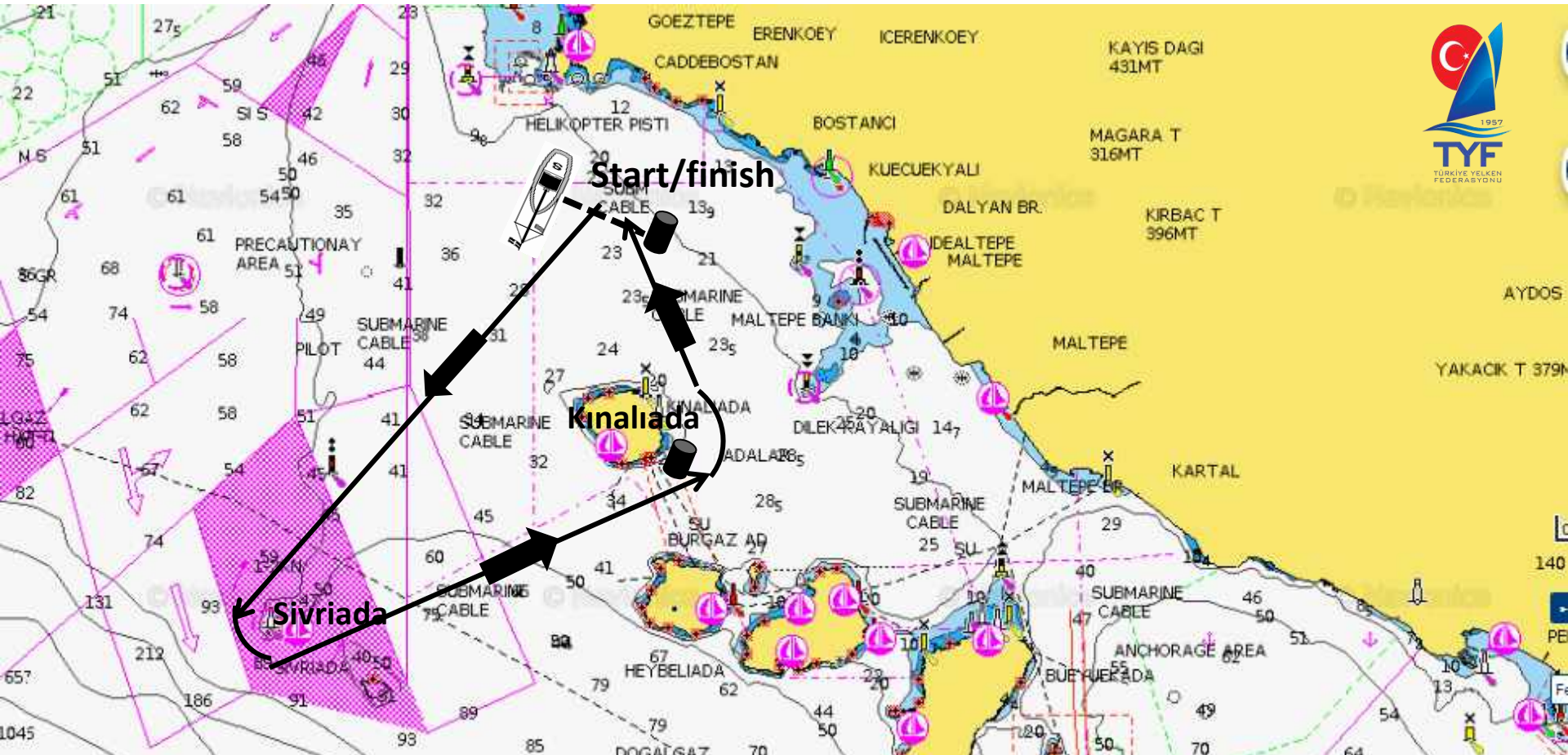


**START – 1 - 1A – FINISH**

**All course marks shall be left to  
port.**

# TURKCELL PLATINUM BOSPHORUS CUP

## 27.09.2020



**ALTERNATIVE COASTAL COURSE – 1:** Start – Sivriada to the port – Kinalıada to the port – the mark located to the south east of Kinalı Island to port- Finish (Approximately 14)miles)

\*\*If alternative coastal course is applied, it will be announced through VHF 73 before the warning signal. The boats will be notified about the applied alternative course by a White flag writing “1” or “2” on it in black.

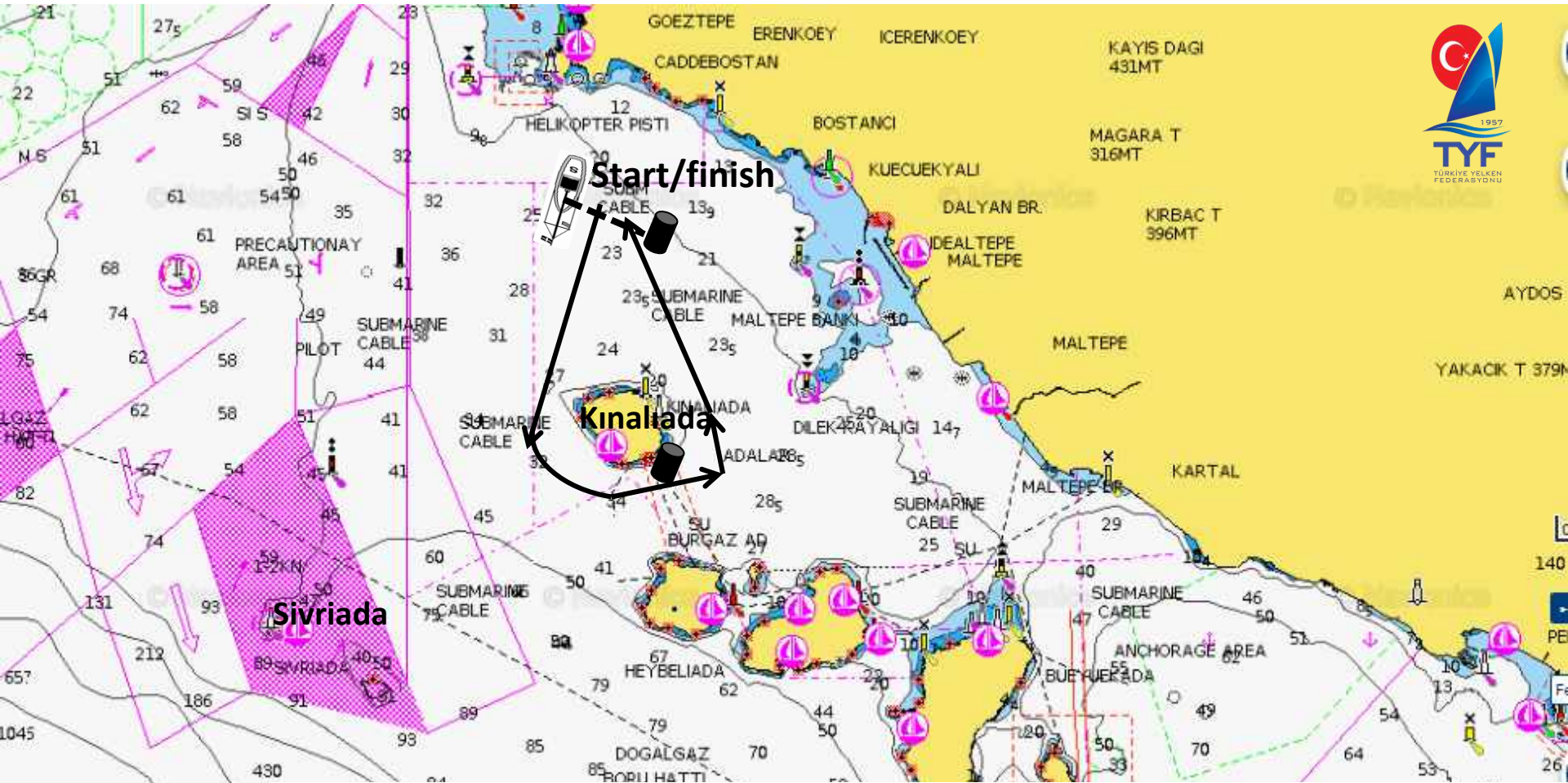
Approximate coordinates of the mark located to the south east of KINALI ISLAND of ISTANBUL

40°54'.279 N - 029°03'.430 E



# TURKCELL PLATINUM BOSPHORUS CUP

## 27.09.2020



**ALTERNATIVE COASTAL COURSE – 2:** Start – Kinalıada to the port – the mark located to the south east of Kinalı Island to port - Finish (Approximately 8 miles)

\*\*If alternative coastal course is applied, it will be announced through VHF 73 before the warning signal. The boats will be notified about the applied alternative course by a White flag writing “1” or “2” on it in black.

Approximate coordinates of the mark located to the south east of KINALI ISLAND of ISTANBUL  
40°54'.279 N - 029°03'.430 E